

LIGHT SOURCES

LED/INCANDESCENT COMPATIBILITY:

- **2777:**
 - PAR38 LED (1 x 150 Watts Max)
 - PAR38 Incandescent (1 x 150 Watts Max)
- **2778:**
 - PAR30 LED (1 x 75 Watts Max)
 - PAR30 Incandescent (1 x 75 Watts Max)
- **:**
 - PAR20 LED (1 x 50 Watts Max)
 - PAR20 Incandescent (1 x 50 Watts Max)
- Lamps Sold Separately

EDISON BASE LAMPHOLDER:

- Medium Base (E26)
- Replaceable PAR LED Light Engine or PAR Halogen Bulb
 - **2777:** PAR38 (1 x 150W Max)
 - **2778:** PAR30 (1 x 75W Max)
 - **2779:** PAR20 (1 x 50W Max)

OPTICS

ADJUSTABLE/HORIZONTAL

AIMING: Up to 90° tilt from vertical axis and up to 355° rotation around vertical axis.

DESIGN:

Unique Integral Construction

FINISH/COLORS: Anodized (Clear)

PRODUCTION PROCESS:

CNC Precision-Spun

MATERIAL: Specification-Grade Aluminum Alloy, .060" Thick

CONSTRUCTION

HOUSING:

Die-Formed Fabrication

FINISH/COLORS:

- Powdercoat Paint Colors (3)
 - Black (BK)
 - White (WH)
 - Silver Gray (SL)

DIMENSIONS:

- **2777:** 9½" H x 5" Dia. (Large Gimbal Ring)
- **2778:** 8" H x 4¼" Dia. (Medium Gimbal Ring)
- **2779:** 6¾" H x 3½" Dia. (Small Gimbal Ring)

INSTALLATION

MOUNTING:

- Mounts to 120V AC *QuantaLight* Track Systems
 - TSQ1: 1-Circuit/1-Neutral (1C1N)
 - TSQ2: 2-Circuit/1-Neutral (2C1N)
- Mounts to 1-Circuit or 2-Circuit Track System Platforms

ADAPTERS: Listed Components

ELECTRICAL

OUTPUT POWER SUPPLY: Class II

POWER FACTOR (PF): >.9

THD: <20%

INPUT VOLTAGE: 120V at 50/60 Hz (System Adapter Dependant)

COMPLIANCES/WARRANTY

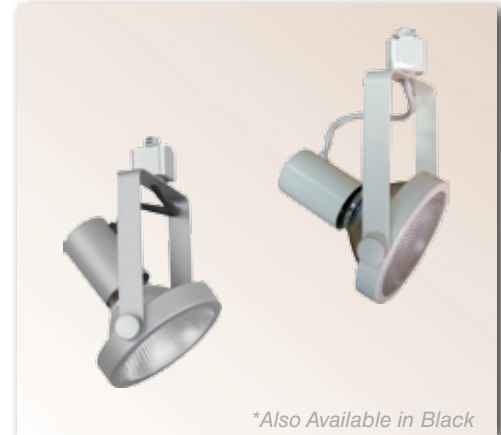
- cETLus LISTED**
- RoHS COMPLIANT**
- LED COMPATIBLE**
- DRY LOCATIONS ONLY**

- TRACK HEAD MODEL** **2777**
- TRACK ADAPTER** **Q2 1C1N & 2C1N (120V)**
- FINISH**
 - 5 Black (Painted)**
 - 6 White (Painted)**
 - 20 Silver Gray (Painted)**

2777/2778

INCANDESCENT/LED TRACK HEADS

2777



*Also Available in Black

90°

MED. BASE E26

1C1N

2C1N

DRY ONLY

355°

- TRACK HEAD MODEL** **2778**
- TRACK ADAPTER** **Q2 1C1N & 2C1N (120V)**
- FINISH**
 - 5 Black (Painted)**
 - 6 White (Painted)**
 - 20 Silver Gray (Painted)**

2778



90°

MED. BASE E26

1C1N

2C1N

DRY ONLY

355°

TRACK HEAD MODEL	<input checked="" type="checkbox"/> 2779
TRACK ADAPTER	<input checked="" type="checkbox"/> Q2 1C1N & 2C1N (120V)
FINISH	<input type="checkbox"/> 5 Black (Painted) <input type="checkbox"/> 6 White (Painted) <input type="checkbox"/> 20 Silver Gray (Painted)



*Also Available in Black

MED. BASE E26

1C1N

2C1N

DRY ONLY

355°

90°

LIGHT SOURCES

LED/INCANDESCENT

COMPATIBILITY:

- **2777:**
 - PAR38 LED (1 x 150 Watts Max)
 - PAR38 Incandescent (1 x 150 Watts Max)
 - **2778:**
 - PAR30 LED (1 x 75 Watts Max)
 - PAR30 Incandescent (1 x 75 Watts Max)
 - **2779:**
 - PAR20 LED (1 x 50 Watts Max)
 - PAR20 Incandescent (1 x 50 Watts Max)
- Lamps Sold Separately

EDISON BASE LAMPHOLDER:

- Medium Base (E26)
- Replaceable PAR LED Light Engine or PAR Halogen Bulb
 - **2777:** PAR38 (1 x 150W Max)
 - **2778:** PAR30 (1 x 75W Max)
 - **2779:** PAR20 (1 x 50W Max)

OPTICS

ADJUSTABLE/HORIZONTAL

AIMING: Up to 90° tilt from vertical axis and up to 355° rotation around vertical axis.

DESIGN:

Unique Integral Construction

FINISH/COLORS: Anodized (Clear)

PRODUCTION PROCESS:

CNC Precision-Spun

MATERIAL: Specification-Grade Aluminum Alloy, .060" Thick

CONSTRUCTION

HOUSING:

Die-Formed Fabrication

FINISH/COLORS:

- Powdercoat Paint Colors (3)
 - Black (BK)
 - White (WH)
 - Silver Gray (SL)

DIMENSIONS:

- **2777:** 9½" H x 5" Dia. (Large Gimbal Ring)
- **2778:** 8" H x 4¼" Dia. (Medium Gimbal Ring)
- **2779:** 6¾" H x 3½" Dia. (Small Gimbal Ring)

INSTALLATION

MOUNTING:

- Mounts to 120V AC *QuantaLight* Track Systems
 - TSQ1: 1-Circuit/1-Neutral (1C1N)
 - TSQ2: 2-Circuit/1-Neutral (2C1N)
- Mounts to 1-Circuit or 2-Circuit Track System Platforms

ADAPTERS: Listed Components

ELECTRICAL

OUTPUT POWER SUPPLY: Class II

POWER FACTOR (P_f): >.9

THD: <20%

INPUT VOLTAGE: 120V at 50/60 Hz (System Adapter Dependant)

COMPLIANCES/WARRANTY

- cETLus LISTED
- RoHS COMPLIANT
- LED COMPATIBLE
- DRY LOCATIONS ONLY