

FEATURES     

APPLICATIONS

NEW CONSTRUCTION, COMMERCIAL OR RESIDENTIAL

LIGHT SOURCES

LED & INCANDESCENT COMPATIBILITY:

- **LED or Incandescent**
MR16 Type Lamp/12V/50W Max
- Lamps Sold Separately (Refer to Compatible Trims for Compatible Lamp Types and Sizes)
- **BI-PIN SOCKET:** GU5.3
- **THERMAL MANAGEMENT:** Passive
- **ADJUSTABLE SOCKET CUP:** Socket cup adjusts vertically.

INSTALLATION

CEILING:

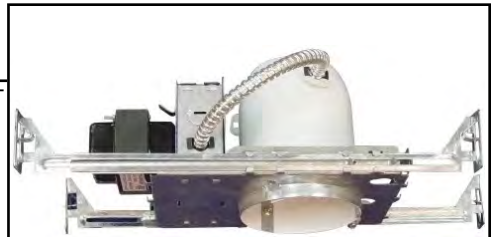
- Accommodates Up to 1" Thickness
- Non-Type IC:
Insulation to Be Kept 3" Away
- Non Air-Tight
- 4 1/8" Ceiling Cutout Size

MOUNTING:

- Adjustable Hanger Bars (14" to 24")

BOX WIRING:

- Integral Thru-Branch, 4 In/4 Out



Catalog #:

Type:

Project:

Prepared By:

COMPATIBLE TRIMS

FINISH/COLORS/TRIM:

- See Compatible Trims Below

COMPLIANCES/WARRANTY

-  **cULus LISTED**
-  **SUITABLE FOR DAMP LOCATIONS**
-  **LED COMPATIBLE**
-  **RECESSED DOWNLIGHT**

AT A GLANCE

Recessed, fixed-position downlight for new construction applications utilizing standard plenum heights. Aperture 4". Uses 12-volt LED or Incandescent lamps. Maintenance access from both below and above ceiling.

ORDER CONFIGURATOR

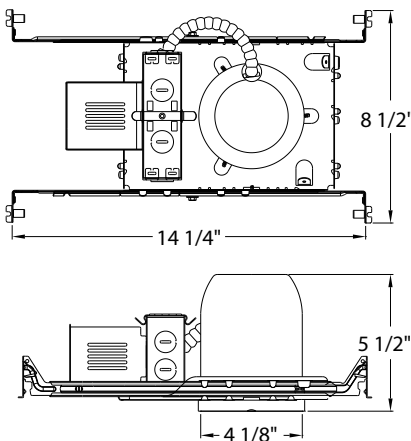
To order, select one option from each table column to configure the desired recessed downlight product catalog code. Then, fill in the boxes below (e.g., Recessed Downlight #: V8404-1). To order compatible reflectors/trims (sold separately), use the separate reflector/trim specification sheet(s).

RECESSED DOWNLIGHT

	1
MODEL	VOLTAGE

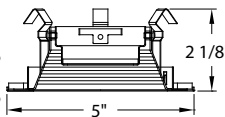
V8408 (50 Watt Max) 1 120V

84 SERIES LOW VOLTAGE TRIMS & QUICK VIEWS



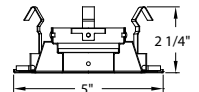
8470-3 Chrome Clear Reflector
4 3/4" Outside Diameter

Non-IC 50W MR16
IC 35W MR16



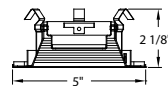
8471-5 Black Baffle Pinhole
4 3/4" Outside Diameter

Non-IC 50W MR16
IC 35W MR16



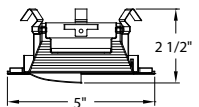
8470-6 White Metal Baffle
4 3/4" Outside Diameter

Non-IC 50W MR16
IC 35W MR16



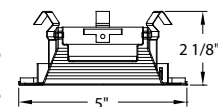
8473-5 Black Baffle Wall Wash
4 3/4" Outside Diameter

Non-IC 50W MR16
IC 35W MR16



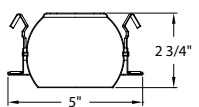
8470-5 Black Metal Baffle
4 3/4" Outside Diameter

Non-IC 50W MR16
IC 35W MR16



8472-6 White Eyeball
4 3/4" Outside Diameter

Non-IC 50W MR16
IC 35W MR16



8474-5 White Eyeball
4 3/4" Outside Diameter

Non-IC 50W MR16
IC 35W MR16

