

FEATURES 

APPLICATIONS
NEW CONSTRUCTION, COMMERCIAL
OR RESIDENTIAL

LIGHT SOURCES
LED & INCANDESCENT COMPATIBILITY:

- **LED or Incandescent**
MR16 Type Lamp/12V/35W Max
- Lamps Sold Separately (Refer to Compatible Trims for Compatible Lamp Types and Sizes)
- **BI-PIN SOCKET:** GU5.3
- **THERMAL MANAGEMENT:** Passive
- **ADJUSTABLE SOCKET CUP:** Socket cup adjusts vertically.

INSTALLATION
CEILING:

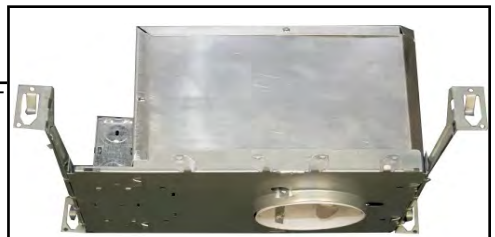
- Accommodates Up to 1" Thickness
 - Type IC: Suitable for Direct Contact with Insulation
 - Air-Tight
 - 4 1/8" Ceiling Cutout Size

MOUNTING:

- Adjustable Hanger Bars (14" to 24")

BOX WIRING:

- Integral Thru-Branch, 4 In/4 Out



Catalog #:

Type:

Project:

Prepared By:

AT A GLANCE

Recessed, fixed-position downlight for new construction applications utilizing standard plenum heights. Aperture 4". Uses 12-volt LED or Incandescent lamp. Maintenance access from both below and above ceiling.

COMPATIBLE TRIMS

FINISH/COLORS/TRIM:

- See Compatible Trims Below

COMPLIANCES/WARRANTY

- cULus LISTED**
- SUITABLE FOR DAMP LOCATIONS**
- LED COMPATIBLE**
- RECESSED DOWNLIGHT**

ORDER CONFIGURATOR

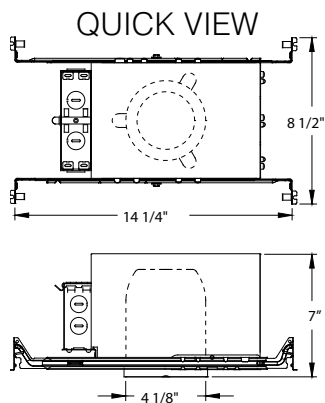
To order, select one option from each table column to configure the desired recessed downlight product catalog code. Then, fill in the boxes below (e.g., Recessed Downlight #: V8404-1). To order compatible reflectors/trims (sold separately), use the separate reflector/trim specification sheet(s).

RECESSED DOWNLIGHT #

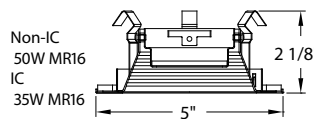
	1
RD MODEL	VOLTAGE

V8412 (35 Watt Max) 1 120V

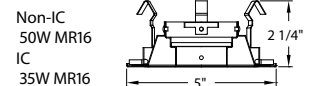
84 SERIES LOW VOLTAGE TRIMS & QUICK VIEWS



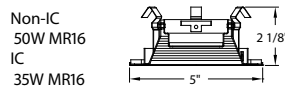
8470-3 Chrome Clear Reflector
4 3/4" Outside Diameter



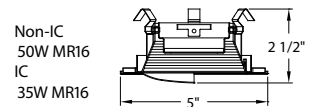
8471-5 Black Baffle Pinhole
4 3/4" Outside Diameter



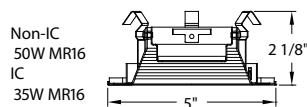
8470-6 White Metal Baffle
4 3/4" Outside Diameter



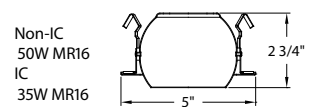
8473-5 Black Baffle Wall Wash
4 3/4" Outside Diameter



8470-5 Black Metal Baffle
4 3/4" Outside Diameter



8472-6 White Eyeball
4 3/4" Outside Diameter



8474-5 White Eyeball
4 3/4" Outside Diameter

