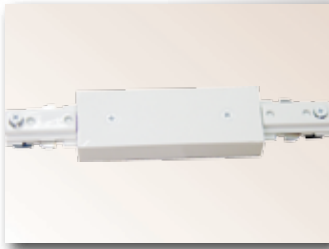


TSQ1 Connectors & Accessories

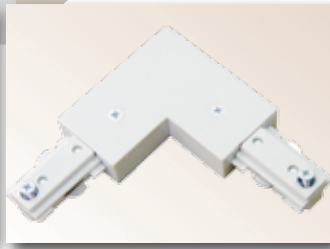
QLUXE SPECIFICATION-GRADE | ARCHITECTURAL | TRACK | TRACK SYSTEMS | 1-CIRCUIT/1-NEUTRAL | 120V | TSQ1 Connectors & Accessories

Q2712



STRAIGHT CONNECTOR

Q2713



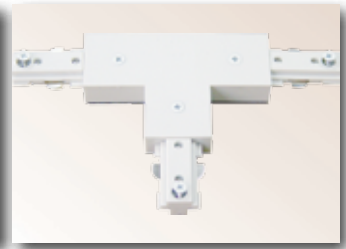
"L" CONNECTOR (90°)

Q2714



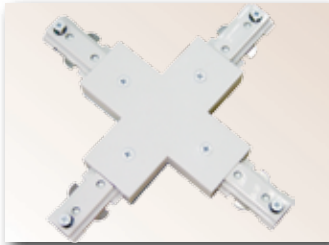
LIVE END J-BOX FEED

Q2715



"T" CONNECTOR

Q2716



"X" CONNECTOR

Q2717



FLOATING CANOPY

Q2718



MONOPOINT CANOPY

Q2719



FLEXIBLE CONNECTOR

Q2721



T-BAR CLIP

Q2722



LIVE END CONNECTOR

Q2723



PENDANT
TRACK ADAPTER

Q2724



MINI JOINER

Q2791-2794



EXTENSION
WAND
(12"/18"/24"/36"/48")

QCL1LF



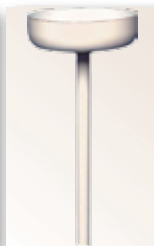
CURRENT LIMITER
IN-LINE FEED

QCL1EF



CURRENT LIMITER
END FEED

Q18 / Q36 / Q48



PENDANT KIT
(18" / 36" / 48" STEEL
STEM)

Q2701



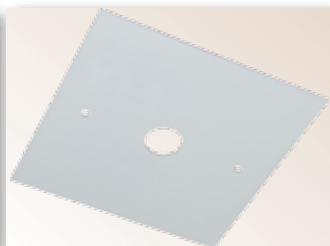
DEAD END

Q2702



PENDANT ASSEMBLY KIT

Q2704



OUTLET BOX COVER

Q2705



WIREWAY COVER FOR
PENDANT ASSEMBLY KIT

CB120 / CB300 / CB600 / CB960
/ CB1200



CIRCUIT BREAKER
(120W / 300W / 600W / 960W /
1200W)

ELECTRICAL

ELECTRICAL CAPACITY: 20 Amps

POLARITY/GROUND:

Completely polarized and grounded.

POLARITY GROOVE:

Grooved track side indicates polarity.

Use to ensure electrical installation meets NEC codes and standards.

MOUNTING:

Ceiling mounting recommended. Consult factory for alternate mounting configurations.

INSTALLATION

LINEAR/GRID CONFIGURATIONS:

May be installed in linear or grid configurations.

FIELD-CUTTABLE TRACK SECTIONS:

Track sections are field cuttable.

COMPLIANCES/WARRANTY

cULus LISTED

TITLE 24: Current limiting feeds approved by the California Energy Commission to meet the requirements of Title 24. Current limiting feeds comply with ASHRAE90.1 and IECC Section 805.5.1.4 for track current limiting.

5-YEAR LIMITED WARRANTY

RoHS COMPLIANT

DRY LOCATIONS ONLY



TSQ1

1-CIRCUIT/1-NEUTRAL 120V TRACK SYSTEM

**TSQ1 Track Systems, Connectors, & Accessories
Also Available in Black or Silver Gray*



TRACK SYSTEM

MODEL

☒ **TSQ1**

LENGTH

- ☐ **02** 2 Ft.
☐ **04** 4 Ft.
☐ **06** 6 Ft.
☐ **08** 8 Ft.

FINISH

- ☐ **5** Black (Painted)
☐ **6** White (Painted)
☐ **20** Silver Gray (Painted)

VOLTAGE

☒ **1** 120V

CONNECTORS (SOLD SEPARATELY)

- ☐ **Q2712** Straight Connector
☐ **Q2713** "L" Connector (90°)
☐ **Q2714** Live End J-Box Feed
☐ **Q2715** "T" Connector
☐ **Q2716** "X" Connector
☐ **Q2717** Floating Canopy
☐ **Q2718** Monopoint Canopy
☐ **Q2719** Flexible Connector
☐ **Q2721** T-Bar Clip
☐ **Q2722** Live End Connector
☐ **Q2723** Pendant Track Adapter
☐ **Q2724** Mini Joiner



CIRCUIT BREAKER 1

CIRCUIT BREAKER 2

- ☐ **QCL1LF**
Current Limiter In-Line Feed
(If ☒ **QCL1LF**, select **Circuit Breaker 1** ☒ **CB1200** and a **Circuit Breaker 2**.)

- ☐ **QCL1EF**
Current Limiter End Feed
(If ☒ **QCL1EF**, select **Circuit Breaker 1** ☒ **CB1200** and a **Circuit Breaker 2**.)

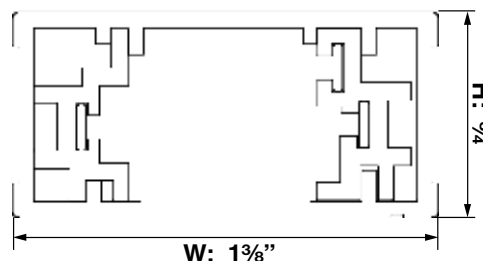
- ☐ **CB1200**
1200W Circuit Breaker
(10A at 120V)

- ☐ **CB120** 120W Circuit Breaker (1A at 120V)
☐ **CB300** 300W Circuit Breaker (2.5A at 120V)
☐ **CB600** 600W Circuit Breaker (5A at 120V)
☐ **CB960** 960W Circuit Breaker (8A at 120V)
☐ **CB1200** 1200W Circuit Breaker (10A at 120V)

ACCESSORIES (SOLD SEPARATELY)

- ☐ **Q18** Pendant Kit (18" Steel Stem)
☐ **Q36** Pendant Kit (36" Steel Stem)
☐ **Q48** Pendant Kit (48" Steel Stem)
☐ **Q2701** Dead End
☐ **Q2702** Pendant Assembly Kit
☐ **Q2704** Outlet Box Cover
☐ **Q2705** Wireway Cover for Pendant Assembly Kit

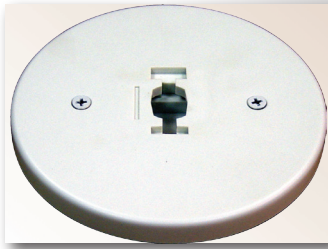
QUICK VIEW



TSQ2 Connectors & Accessories

QLUXE SPECIFICATION-GRADE | ARCHITECTURAL | **TRACK** | TRACK SYSTEMS | 2-CIRCUIT/1-NEUTRAL | 120V | TSQ2 Connectors & Accessories

Q2718



MONOPOINT CANOPY

Q2721



T-BAR CLIP

Q2723



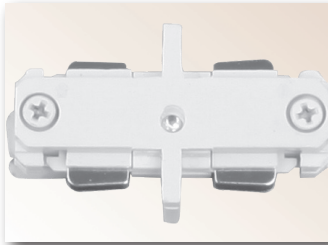
**PENDANT
TRACK ADAPTER**

Q2751



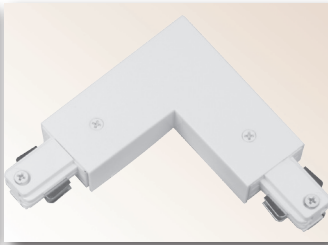
LIVE END CONNECTOR

Q2752



MINI JOINER

Q2754



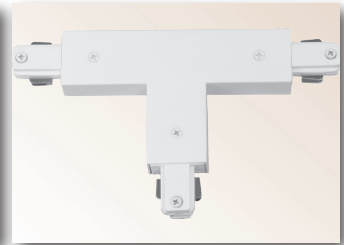
"L" CONNECTOR (90°)

Q2755



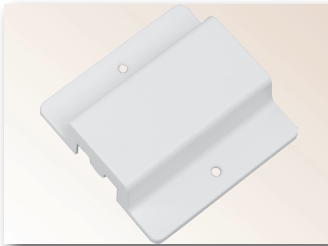
LIVE END J-BOX FEED

Q2756



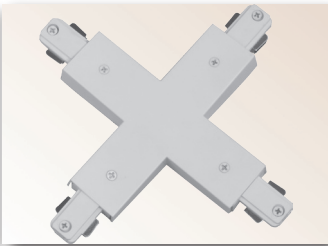
"T" CONNECTOR

Q2757



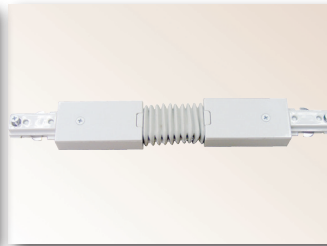
FLOATING CANOPY

Q2758



"X" CONNECTOR

Q2759



FLEXIBLE CONNECTOR

Q2791-2794



**EXTENSION
WAND
(12"/18"/24"/36"/48")**

QCL2LF



**CURRENT LIMITER
IN-LINE FEED**

QCL2EF



**CURRENT LIMITER
END FEED**

Q18 / Q36 / Q48



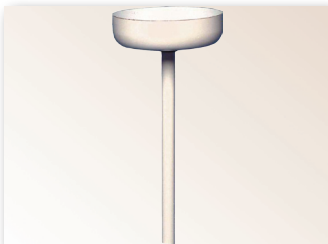
**PENDANT KIT
(18" / 36" / 48" STEEL
STEM)
Q2705**

Q2701



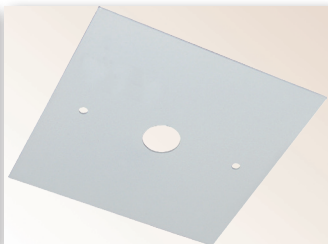
DEAD END

Q2702



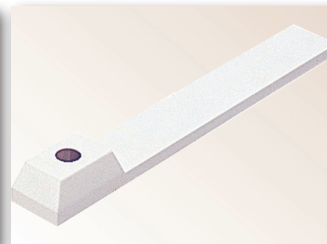
PENDANT ASSEMBLY KIT

Q2704



OUTLET BOX COVER

Q2705



**WIREWAY COVER FOR
PENDANT ASSEMBLY KIT**

CB120 / CB300 / CB600 /
CB960 / CB1200



**CIRCUIT BREAKER
(120W / 300W / 600W / 960W /
1200W)**

ELECTRICAL

ELECTRICAL CAPACITY:

2 x 20 Amps (20 Amps per Circuit)
(40 Amps Total)

POLARITY/GROUND:

Completely polarized and grounded.

POLARITY GROOVE:

Grooved track side indicates polarity.
Use to ensure electrical installation
meets NEC codes and standards.

MOUNTING:

Ceiling mounting recommended.
Consult factory for alternate
mounting configurations.

INSTALLATION

LINEAR/GRID CONFIGURATIONS:

May be installed in linear or grid
configurations.

FIELD-CUTTABLE TRACK

SECTIONS:

Track sections are field cuttable.

COMPLIANCES/WARRANTY

cULus LISTED

TITLE 24: Current limiting
feeds approved by the
California Energy Commission
to meet the requirements of
Title 24. Current limiting feeds
comply with ASHRAE90.1 and
IECC Section 805.5.1.4 for
track current limiting.

5-YEAR LIMITED WARRANTY
RoHS COMPLIANT
DRY LOCATIONS ONLY



2-CIRCUIT/1-NEUTRAL 120V TRACK SYSTEM

TSQ2

**TSQ2 Track Systems, Connectors, & Accessories*
Also Available in Black or Silver Gray



TRACK SYSTEM

MODEL

☒ **TSQ2**

LENGTH

☐ **02** 2 Ft.
☐ **04** 4 Ft.
☐ **06** 6 Ft.
☐ **08** 8 Ft.

FINISH

☐ **5** Black (Painted)
☐ **6** White (Painted)
☐ **20** Silver Gray (Painted)

VOLTAGE

☒ **1** 120V

CONNECTORS (SOLD SEPARATELY)

☐ **Q2718** Monopoint Canopy
☐ **Q2721** T-Bar Clip
☐ **Q2723**
Pendant Track Adapter
☐ **Q2751** Live End Connector
☐ **Q2752** Mini Joiner
☐ **Q2754** "L" Connector (90°)
☐ **Q2755** Live End J-Box Feed
☐ **Q2756** "T" Connector
☐ **Q2757** Floating Canopy
☐ **Q2758** "X" Connector
☐ **Q2759** Flexible Connector

☐ **Q2791**
12" Extension Wand
☐ **Q2795**
18" Extension Wand
☐ **Q2792**
24" Extension Wand
☐ **Q2793**
36" Extension Wand
☐ **Q2794**
48" Extension Wand



CIRCUIT BREAKER 1

CIRCUIT BREAKER 2

☐ **QCL2LF** Current Limiter
In-Line Feed (If ☒ **QCL2LF**, select
Circuit Breaker 1 ☒ **CB1200** and a
Circuit Breaker 2.)

☐ **QCL2EF** Current Limiter End
Feed (If ☒ **QCL2EF**, select Circuit
Breaker 1 ☒ **CB1200** and a Circuit
Breaker 2.)

☐ **CB1200**
1200W Circuit Breaker
(10A at 120V)

☐ **CB120** 120W Circuit
Breaker (1A at 120V)
☐ **CB300** 300W Circuit
Breaker (2.5A at 120V)
☐ **CB600** 600W Circuit
Breaker (5A at 120V)
☐ **CB960** 960W Circuit
Breaker (8A at 120V)
☐ **CB1200** 1200W Circuit
Breaker (10A at 120V)

ACCESSORIES (SOLD SEPARATELY)

☐ **Q18**
Pendant Kit (18" Steel Stem)
☐ **Q36**
Pendant Kit (36" Steel Stem)
☐ **Q48**
Pendant Kit (48" Steel Stem)
☐ **Q2701** Dead End
☐ **Q2702**
Pendant Assembly Kit
☐ **Q2704** Outlet Box Cover
☐ **Q2705** Wireway Cover for
Pendant Assembly Kit

QUICK VIEW

