

FEATURES     

LED LIGHT ENGINE

WATTS/LUMENS PER HEAD: 25W/1300 lm, 45W/2000 lm, or 60W/3000 lm per Head
CRI: 91

CCT: 2700K, 3000K, 3500K, or 4000K

BINNING: 3 SDCM

THERMAL MANAGEMENT: Passive

LIFE (RATED): 50,000 hours based on LED testing per LM80-08 and projected values from IESNA TM21-11.

LED DRIVER

OUTPUT POWER SUPPLY: Class II

POWER FACTOR (Pf): > .9

THD: <20%

INPUT VOLTAGE: 120V/277V at 50/60 Hz

DIMMING:

 TRIAC/ELV, 5% (120V AC Only)  0-10V, 1% (120V/277V) (See Dimming Below)

OPTICS

BEAM ANGLES: 15°, 24°, or 38°

RETRACTABLE GIMBAL AIMING:

Up to 45° tilt and up to 355° rotation in upper position. 180° horizontal aiming in lowest position.

EMERGENCY BACKUP BATTERY

BATTERY LED LOAD:

- Up to 7 Watts at 600 Lumens Minimum for 90 Minutes
- Up to 20 Watts at 1750 Lumens Minimum for 90 Minutes
- Remote Test Switch Included

REFLECTOR

RETRACTABLE GIMBALS:

Internal to Integral LED

DESIGN:

Self-Flanged, One-Piece Construction

FINISH/COLORS/TRIM:

Anodized (Clear); Painted White Flange Trim

PRODUCTION PROCESS:

CNC Precision-Spun

MATERIAL: Specification-Grade Aluminum Alloy, .060" Thick

INSTALLATION

CEILING:

- Accommodates Up to 1¼" Thickness
- Non-Type IC, Insulation to Be Kept 3" Away
- 8⅞" x 23⅞" Ceiling Cutout Size
- Maintenance Access from Above and Below Ceiling

MOUNTING:

- Integrated Universal Mounting Brackets
 - Advanced High-Strength Steel (AHSS)
- Hanger Bars (Sold Separately) (See Below)

J-BOX WIRING:

Integral Thru-Branch, 4 In/4 Out

COMPLIANCES/WARRANTY

 **cULus LISTED**

 **FCC COMPLIANT**

 **5-YEAR LIMITED WARRANTY**

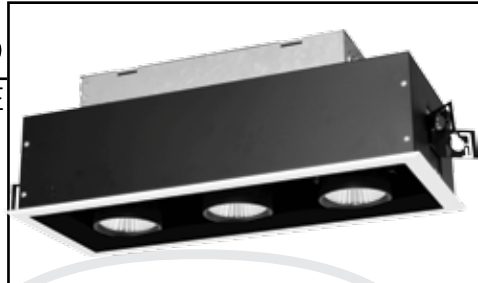
 **RoHS COMPLIANT**

 **SUITABLE FOR DAMP LOCATIONS**

 **ENERGY-EFFICIENT**

 **LED**

 **RECESSED DOWNLIGHT**



Catalog #:

Type:

Project:

Prepared By:

AT A GLANCE

Recessed three-head, architectural downlight. Fully adjustable LED heads can be flush or extended downwards for increased aiming angles and superior coverage. Ideal for down and accent lighting in indoor spaces where performance and design matter. Choose from 1300 lm/25W, 2000 lm/45W, or 3000 lm/60W per head, and a CCT of 2700K, 3000K, 3500K, or 4000K. 91 CRI. 15°, 24°, or 38° optics. Various dimming options available. Precision-formed all steel housing. Aperture is 7½" x 21⅞" and flanged with ¾" wide trim. Overall trim dimensions are 9⅝" x 23⅞".

ORDER CONFIGURATOR

To order, select one option from each table column to configure the desired recessed multiple product catalog code. Then, fill in the boxes below (e.g., Recessed Multiple #: ML13-35-13-15-BK-LUTECO-1). To order additional items (optional), up to one option from each table column can be selected from the Optional section. Then, fill in the dashed box(es).

RECESSED MULTIPLE

ML13						
RM MODEL	CCT	LUMENS	OPTICS	INTERIOR FINISH	DIMMING	VOLTAGE
<input checked="" type="checkbox"/> ML13	<input type="checkbox"/> 27 2700K	<input type="checkbox"/> 13 1300 lm	<input type="checkbox"/> 15 15°	<input type="checkbox"/> BK Black	<input type="checkbox"/> LELV Flicker-Free TRIAC/ELV, 5% (120V Only)	<input type="checkbox"/> 1 120V
	<input type="checkbox"/> 30 3000K	(Per Head)	<input type="checkbox"/> 24 24°	(Painted)		<input type="checkbox"/> 2 277V
	<input type="checkbox"/> 35 3500K	<input type="checkbox"/> 20 2000 lm	<input type="checkbox"/> 38 38°	<input type="checkbox"/> WH White	<input type="checkbox"/> L010 0 to 10V Dimming, 1%	
	<input type="checkbox"/> 40 4000K	(Per Head)		(Painted)	<input type="checkbox"/> LUTIII Lutron Hi-Lume, 1%	
		<input type="checkbox"/> 30 3000 lm			<input type="checkbox"/> LUTECO Lutron Ecosystem, 1%	
		(Per Head)			<input type="checkbox"/> LDALI Dali, 1%	
					<input type="checkbox"/> LDMX DMX512, 1%	

OPTIONAL

EMERGENCY BATTERY BACKUPS	HANGER BARS (SOLD SEPARATELY)
<input type="checkbox"/> EMB07 7W	<input type="checkbox"/> HBC C Channel
<input type="checkbox"/> EMB20 20W	<input type="checkbox"/> HBF Flat Style
	<input type="checkbox"/> HBJ Wood Joist

QUICK VIEW

