

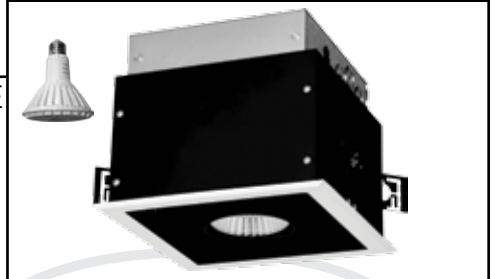


LED LIGHT ENGINE

WATTS/LUMENS: 10W/800 lm
CRI: 91
CCT: 3000K
THERMAL MANAGEMENT: Passive
LIFE (RATED): 50,000 Hours
LED: PAR30 LED Lamp (10W) Included
EDISON BASE LAMPHOLDER:
 ▪ Medium Base (E26)
 ▪ Replaceable PAR30 LED Light Engine
DIMMING: Dimmable (Lamp Dependant)
INPUT VOLTAGE: 120V at 60 Hz

COMPLIANCES/WARRANTY

cETLus LISTED
FCC COMPLIANT
5-YEAR LIMITED WARRANTY
RoHS COMPLIANT
SUITABLE FOR DAMP LOCATIONS
ENERGY-EFFICIENT
LED
RECESSED DOWNLIGHT



Catalog #:

Type:

Project:

Prepared By:

OPTICS

BEAM ANGLES: 25° or 40°
GIMBAL AIMING: Up to 45° tilt and up to 355° rotation in upper position. 90° horizontal aiming in lowest position.

INSTALLATION

CEILING:
 ▪ Accommodates Up to 1 1/4" Thickness
 ▪ Non-Type IC, Insulation to Be Kept 3" Away
 ▪ 8 7/8" x 8 7/8" Ceiling Cutout Size
 ▪ Maintenance Access from Above and Below Ceiling
MOUNTING:
 ▪ Integrated Universal Mounting Brackets
 ▪ Advanced High-Strength Steel (AHSS)
 ▪ Hanger Bars (Sold Separately) (See Below)
J-BOX WIRING:
 Integral Thru-Branch, 4 In/4 Out

AT A GLANCE

Recessed, architectural downlight utilizing one double gimbal. Ideal for down and accent lighting in indoor spaces where performance and design matter. Internal medium-based socket on a gimbal offers multiple lamp/aiming angle options. Shipped with one 800 lm/3000K, medium base PAR30 LED lamp. 10W. Choose 25° or 40° lamp optics. (No lamp substitutions for this catalog item. See our medium-based "ML21/22/23" series for self lamping options.) Precision-formed all steel housing. Aperture is 7 1/2" x 7 1/2" and flanged with 3/4" wide trim. Overall trim dimensions are 9 5/8" x 9 5/8".

ORDER CONFIGURATOR

To order, select one option from each table column to configure the desired recessed multiple product catalog code. Then, fill in the boxes below (e.g., Recessed Multiple #: ML21-30-08-40-BK-1). To order additional items (optional), up to one option from each table column can be selected from the Optional section. Then, fill in the dashed box(es).

RECESSED MULTIPLE #					
ML21	30	08			1
RECESSED MULTIPLE MODEL	CCT	LUMENS	OPTICS	INTERIOR FINISH	VOLTAGE
<input checked="" type="checkbox"/> ML21	<input checked="" type="checkbox"/> 30 3000K	<input checked="" type="checkbox"/> 08 800 lm	<input type="checkbox"/> 25 25° <input type="checkbox"/> 40 40°	<input type="checkbox"/> BK Black (Painted) <input type="checkbox"/> WH White (Painted)	<input checked="" type="checkbox"/> 1 120V

OPTIONAL

HANGER BARS (SOLD SEPARATELY)
<input type="checkbox"/> HBC C Channel
<input type="checkbox"/> HBF Flat Style
<input type="checkbox"/> HBJ Wood Joist

QUICK VIEW

