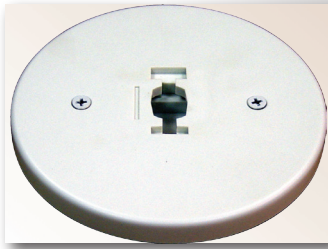


# TSQ2 Connectors & Accessories

QLUXE SPECIFICATION-GRADE | ARCHITECTURAL | TRACK | TRACK SYSTEMS | 2-CIRCUIT/1-NEUTRAL | 120V | TSQ2 Connectors & Accessories

Q2718



MONOPOINT CANOPY

Q2721



T-BAR CLIP

Q2723



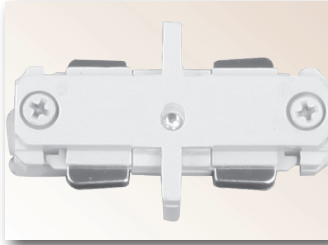
PENDANT TRACK ADAPTER

Q2751



LIVE END CONNECTOR

Q2752



MINI JOINER

Q2754



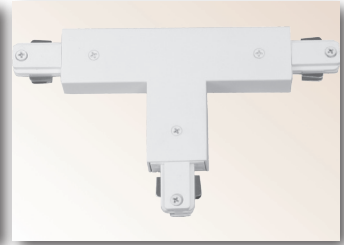
"L" CONNECTOR (90°)

Q2755



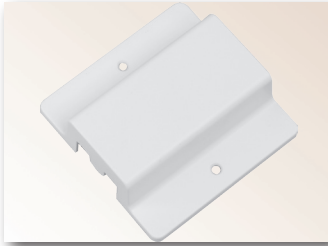
LIVE END J-BOX FEED

Q2756



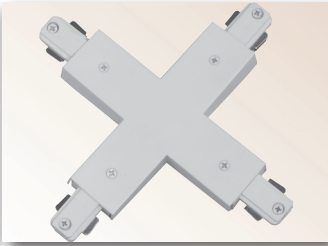
"T" CONNECTOR

Q2757



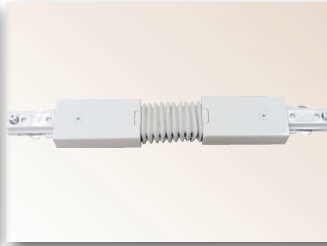
FLOATING CANOPY

Q2758



"X" CONNECTOR

Q2759



FLEXIBLE CONNECTOR

Q2791-2794



EXTENSION WAND  
(12"/18"/24"/36"/48")

QCL2LF



CURRENT LIMITER IN-LINE FEED

QCL2EF



CURRENT LIMITER END FEED

Q18 / Q36 / Q48



PENDANT KIT  
(18" / 36" / 48" STEEL STEM)

Q2701



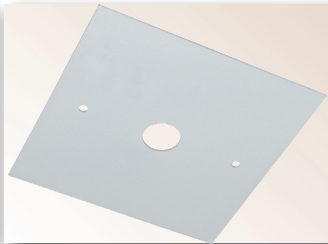
DEAD END

Q2702



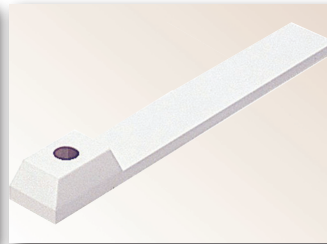
PENDANT ASSEMBLY KIT

Q2704



OUTLET BOX COVER

Q2705



WIREWAY COVER FOR PENDANT ASSEMBLY KIT

CB120 / CB300 / CB600 / CB960 / CB1200



CIRCUIT BREAKER  
(120W / 300W / 600W / 960W / 1200W)

### ELECTRICAL

#### ELECTRICAL CAPACITY:

2 x 20 Amps (20 Amps per Circuit)  
(40 Amps Total)

#### POLARITY/GROUND:

Completely polarized and grounded.

#### POLARITY GROOVE:

Grooved track side indicates polarity.  
Use to ensure electrical installation meets NEC codes and standards.

#### MOUNTING:

Ceiling mounting recommended.  
Consult factory for alternate mounting configurations.

### INSTALLATION

#### LINEAR/GRID CONFIGURATIONS:

May be installed in linear or grid configurations.

#### FIELD-CUTTABLE TRACK SECTIONS:

Track sections are field cuttable.

### COMPLIANCES/WARRANTY

#### cULus LISTED

**TITLE 24:** Current limiting feeds approved by the California Energy Commission to meet the requirements of Title 24. Current limiting feeds comply with ASHRAE90.1 and IECC Section 805.5.1.4 for track current limiting.

#### 5-YEAR LIMITED WARRANTY

**RoHS COMPLIANT**  
**DRY LOCATIONS ONLY**

*\*TSQ2 Track Systems, Connectors, & Accessories  
Also Available in Black or Silver Gray*



#### TRACK SYSTEM MODEL

TSQ2

#### LENGTH

- 02 2 Ft.
- 04 4 Ft.
- 06 6 Ft.
- 08 8 Ft.

#### FINISH

- 5 Black (Painted)
- 6 White (Painted)
- 20 Silver Gray (Painted)

#### VOLTAGE

1 120V

#### CONNECTORS (SOLD SEPARATELY)

- Q2718 Monopoint Canopy
- Q2721 T-Bar Clip
- Q2723 Pendant Track Adapter
- Q2751 Live End Connector
- Q2752 Mini Joiner
- Q2754 "L" Connector (90°)
- Q2755 Live End J-Box Feed
- Q2756 "T" Connector
- Q2757 Floating Canopy
- Q2758 "X" Connector
- Q2759 Flexible Connector
- Q2791 12" Extension Wand
- Q2795 18" Extension Wand
- Q2792 24" Extension Wand
- Q2793 36" Extension Wand
- Q2794 48" Extension Wand

#### CIRCUIT BREAKER 1

#### CIRCUIT BREAKER 2

- QCL2LF Current Limiter In-Line Feed (If  QCL2LF, select **Circuit Breaker 1**  CB1200 and a **Circuit Breaker 2**.)
- QCL2EF Current Limiter End Feed (If  QCL2EF, select **Circuit Breaker 1**  CB1200 and a **Circuit Breaker 2**.)
- CB1200 1200W Circuit Breaker (10A at 120V)
- CB120 120W Circuit Breaker (1A at 120V)
- CB300 300W Circuit Breaker (2.5A at 120V)
- CB600 600W Circuit Breaker (5A at 120V)
- CB960 960W Circuit Breaker (8A at 120V)
- CB1200 1200W Circuit Breaker (10A at 120V)

#### ACCESSORIES (SOLD SEPARATELY)

- Q18 Pendant Kit (18" Steel Stem)
- Q36 Pendant Kit (36" Steel Stem)
- Q48 Pendant Kit (48" Steel Stem)
- Q2701 Dead End
- Q2702 Pendant Assembly Kit
- Q2704 Outlet Box Cover
- Q2705 Wireway Cover for Pendant Assembly Kit

#### QUICK VIEW

