

2-CIRCUIT/1-NEUTRAL 120V TRACK SYSTEM

*TSQ2 Track Systems, Connectors, & Accessories
Also Available in Black or Silver Gray



ELECTRICAL

ELECTRICAL CAPACITY:

2 x 20 Amps (20 Amps per Circuit)
(40 Amps Total)

POLARITY/GROUND:

Completely polarized and grounded.

POLARITY GROOVE:

Grooved track side indicates polarity.
Use to ensure electrical installation meets NEC codes and standards.

MOUNTING:

Ceiling mounting recommended.
Consult factory for alternate mounting configurations.

INSTALLATION

LINEAR/GRID CONFIGURATIONS:

May be installed in linear or grid configurations.

FIELD-CUTTABLE TRACK SECTIONS:

Track sections are field cuttable.

COMPLIANCES/WARRANTY

cULus LISTED

TITLE 24: Current limiting feeds approved by the California Energy Commission to meet the requirements of Title 24. Current limiting feeds comply with ASHRAE90.1 and IECC Section 805.5.1.4 for track current limiting.

5-YEAR LIMITED WARRANTY

RoHS COMPLIANT
DRY LOCATIONS ONLY

TRACK SYSTEM

MODEL

TSQ2

LENGTH

- 02 2 Ft.
- 04 4 Ft.
- 06 6 Ft.
- 08 8 Ft.

FINISH

- 5 Black (Painted)
- 6 White (Painted)
- 20 Silver Gray (Painted)

VOLTAGE

1 120V

CONNECTORS (SOLD SEPARATELY)

- | | | |
|--|--|---|
| <input type="checkbox"/> Q2718 Monopoint Canopy | <input type="checkbox"/> Q2763 Conduit to Track Live End Connector | <input type="checkbox"/> Q2791 12" Extension Wand |
| <input type="checkbox"/> Q2721 T-Bar Clip | | <input type="checkbox"/> Q2795 18" Extension Wand |
| <input type="checkbox"/> Q2723 Light Pendant Track Adapter | | <input type="checkbox"/> Q2792 24" Extension Wand |
| <input type="checkbox"/> Q2751 Live End Connector | | <input type="checkbox"/> Q2793 36" Extension Wand |
| <input type="checkbox"/> Q2752 Mini Joiner | | <input type="checkbox"/> Q2794 48" Extension Wand |
| <input type="checkbox"/> Q2754 "L" Connector (90°) | | |
| <input type="checkbox"/> Q2755 Live End J-Box Feed | | |
| <input type="checkbox"/> Q2756 "T" Connector | | |
| <input type="checkbox"/> Q2757 Floating Canopy | | |
| <input type="checkbox"/> Q2758 "X" Connector | | |
| <input type="checkbox"/> Q2759 Flexible Connector | | |



CIRCUIT BREAKER 1

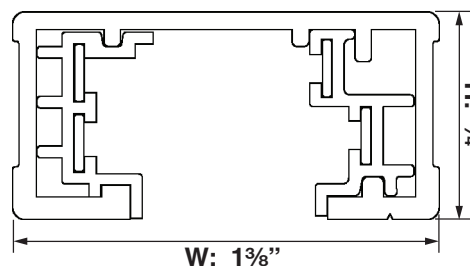
CIRCUIT BREAKER 2

- | | | |
|---|---|---|
| <input type="checkbox"/> QCL2LF Current Limiter In-Line Feed (If <input checked="" type="checkbox"/> QCL2LF, select Circuit Breaker 1 <input checked="" type="checkbox"/> CB1200 and a Circuit Breaker 2 .) | <input type="checkbox"/> CB1200 1200W Circuit Breaker (10A at 120V) | <input type="checkbox"/> CB120 120W Circuit Breaker (1A at 120V) |
| <input type="checkbox"/> QCL2EF Current Limiter End Feed (If <input checked="" type="checkbox"/> QCL2EF, select Circuit Breaker 1 <input checked="" type="checkbox"/> CB1200 and a Circuit Breaker 2 .) | | <input type="checkbox"/> CB300 300W Circuit Breaker (2.5A at 120V) |
| | | <input type="checkbox"/> CB600 600W Circuit Breaker (5A at 120V) |
| | | <input type="checkbox"/> CB960 960W Circuit Breaker (8A at 120V) |
| | | <input type="checkbox"/> CB1200 1200W Circuit Breaker (10A at 120V) |

ACCESSORIES (SOLD SEPARATELY)

- Q18 Pendant Kit (18" Steel Stem)
- Q36 Pendant Kit (36" Steel Stem)
- Q48 Pendant Kit (48" Steel Stem)
- Q2701 Dead End
- Q2705 Wireway Cover for Pendant Assembly Kit

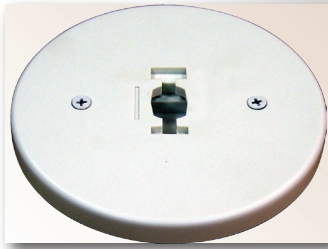
QUICK VIEW



TSQ2 Connectors & Accessories

QLUXE SPECIFICATION-GRADE | ARCHITECTURAL | TRACK | TRACK SYSTEMS | 2-CIRCUIT/1-NEUTRAL | 120V | TSQ2 Connectors & Accessories

Q2718



MONOPOINT CANOPY

Q2721



T-BAR CLIP

Q2723



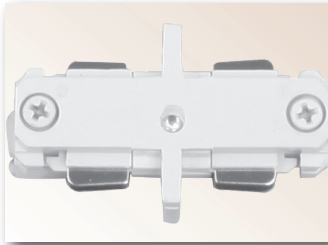
LIGHT PENDANT TRACK ADAPTER

Q2751



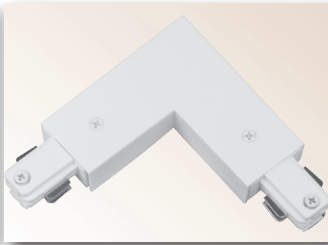
LIVE END CONNECTOR

Q2752



MINI JOINER

Q2754



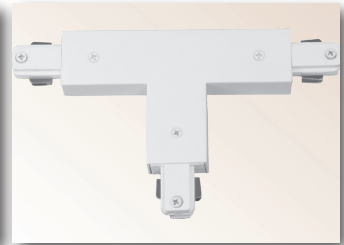
"L" CONNECTOR (90°)

Q2755



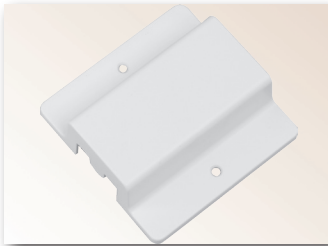
LIVE END J-BOX FEED

Q2756



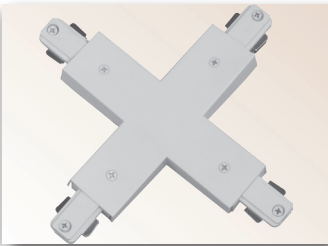
"T" CONNECTOR

Q2757



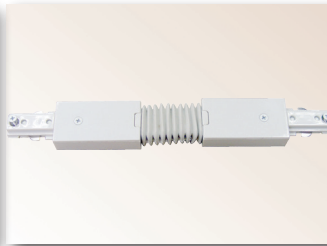
FLOATING CANOPY

Q2758



"X" CONNECTOR

Q2759



FLEXIBLE CONNECTOR

Q2791-2794



EXTENSION WAND
(12"/18"/24"/36"/48")

QCL2LF



CURRENT LIMITER IN-LINE FEED

QCL2EF



CURRENT LIMITER END FEED

Q18 / Q36 / Q48



PENDANT KIT
(18" / 36" / 48" STEEL STEM)

Q2701



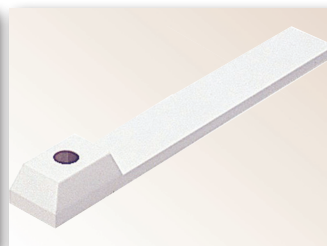
DEAD END

Q2763



NEW! LIVE END CONNECTOR FOR CONDUIT

Q2705



WIREWAY COVER FOR PENDANT ASSEMBLY KIT

CB120 / CB300 / CB600 / CB960 / CB1200



CIRCUIT BREAKER
(120W / 300W / 600W / 960W / 1200W)