

FEATURES



LED LIGHT ENGINE

WATTS/LUMENS:

15W/1000 lm, 20W/1400 lm, 25W/1700 lm, 30W/2100 lm, or 40W/2800 lm

CRI: 91 (Upgrade to 97 CRI [R9=90] available via special/custom order. See Optional section below.)

CCT: 2700K, 3000K, 3500K, or 4000K

BINNING: 3 SDCM

THERMAL MANAGEMENT: Passive

LIFE (RATED): 50,000 hours based on LED testing per LM80-08 and projected values from IESNA TM21-11.

LED DRIVER

OUTPUT POWER SUPPLY: Class II

POWER FACTOR (P_f): >.9

THD: <10%

INPUT VOLTAGE:

120V/277V at 50/60 Hz (See Voltage Below)

DIMMING:

- TRIAC/ELV, 5% (120V AC Only)
- 0-10V, 10% (120V/277V)
- See Dimming below for more options.

COMPATIBLE TRIMS

FINISH/COLORS/TRIM:

See Compatible Trim Specification Sheets

- 6029
- 6031
- 6033
- 6038

INSTALLATION

CEILING:

- Accommodates Up to 1¼" Thickness
- Non-Type IC Insulation to Be Kept 3" Away
- 4" Ceiling Cutout Size
- Maintenance Access from Above and Below Ceiling

MOUNTING:

- Integrated Universal Mounting Brackets
 - Advanced High-Strength Steel (AHSS)
- Hanger Bars (Sold Separately) (See Below)

J-BOX WIRING:

Integral Thru-Branch, 4 In/4 Out

EMERGENCY BACKUP OPTION

BATTERY LED LOAD:

- Up to 7 Watts at 600 Lumens Minimum for 90 Minutes
- Up to 25 Watts at 1750 Lumens Minimum for 90 Minutes
- Remote Test Switch Included

cETLus LISTED

FCC COMPLIANT

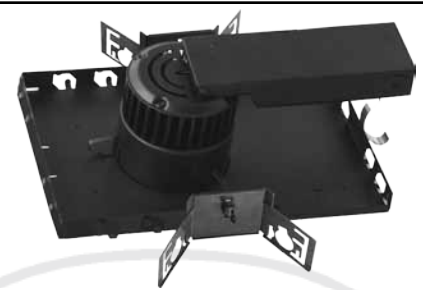
5-YEAR LIMITED WARRANTY

RoHS COMPLIANT

SUITABLE FOR DAMP LOCATIONS

LED

RECESSED DOWNLIGHT



Catalog #:

Type:

Project:

Prepared By:

AT A GLANCE

3" vertical, fixed-position LED recessed downlight. High-performance, specification-grade luminaire ideal for numerous applications such as retail and hospitality. Features up to 2800 delivered lumens, a variety of color temperature options (2700K, 3000K, 3500K, and 4000K), multiple beam angles (18°, 24°, 36°, or 60°), and two standard dimming options (flicker-free TRIAC/ELV, 5% and 0-10V dimming, 10%). Trims available in round or square apertures.

ORDER CONFIGURATOR

To order, select one option from each table column to configure the desired recessed downlight product catalog code. Then, fill in the boxes below (e.g., Recessed Downlight #: RL3V-35-14-60-L010-NC-2). To order trims, use the corresponding specification sheet(s) for the desired compatible trim series. To order additional items (optional), up to one option from each table column can be selected from the Optional section. Then, fill in the dashed box(es).

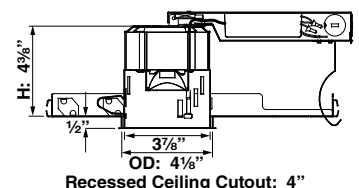
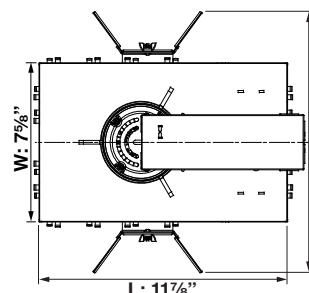
RECESSED DOWNLIGHT

RL3V					NC	
RD MODEL	CCT	LUMENS	OPTICS	DIMMING	IC TYPE	VOLTAGE
<input checked="" type="checkbox"/> RL3V	<input type="checkbox"/> 27 2700K	<input type="checkbox"/> 10 1000 lm	<input type="checkbox"/> 18 18°	<input type="checkbox"/> LELV Flicker-Free TRIAC/ELV, 5% (120V Only)	<input checked="" type="checkbox"/> NC Non-Type IC	<input type="checkbox"/> 120V (LELV drivers)
	<input type="checkbox"/> 30 3000K	<input type="checkbox"/> 14 1400 lm	<input type="checkbox"/> 24 24°	<input type="checkbox"/> L010 0 to 10V Dimming, 10%		<input type="checkbox"/> 120V-277V (Except for LELV drivers)
	<input type="checkbox"/> 35 3500K	<input type="checkbox"/> 17 1700 lm	<input type="checkbox"/> 36 36°	<input type="checkbox"/> LUTIII Lutron Hi-Lume, 1%		
	<input type="checkbox"/> 40 4000K	<input type="checkbox"/> 21 2100 lm	<input type="checkbox"/> 60 60°	<input type="checkbox"/> LUTECO Lutron Ecosystem, 1%		
				<input type="checkbox"/> LDALI Dali, 1%		

OPTIONAL

EMERGENCY BATTERY BACKUPS**	HANGER BARS (SOLD SEPARATELY)	CRI UPGRADE
<input type="checkbox"/> EMB07 7W	<input type="checkbox"/> HBC C Channel	<input type="checkbox"/> CRI97
<input type="checkbox"/> EMB25 25W	<input type="checkbox"/> HBF Flat Style	CRI 97 (R9=90)
	<input type="checkbox"/> HBJ Wood Joist	Upgrade

****Note:** Emergency Battery Backups (EMB) for recessed light fixtures are typically remotely located, usually just above the fixture. They do not come pre-wired to the fixture. Wiring to the fixture's driver is done by the electrician. See EMB specification sheet on our website for details.



FEATURES



DOWNLIGHT/TRIM LED

DESIGN:

Self-Flanged, Two-Piece Construction

FINISH/COLORS/TRIM:

Painted (Black or White) or Anodized (Clear, Haze, or Wheat); Painted White Flange Trim

PRODUCTION PROCESS:

CNC Precision-Spun

MATERIAL: Specification-Grade Aluminum Alloy, .060" Thick

LENS COVER: Clear Glass

COMPATIBILITY

RECESSED DOWNLIGHTS:

- RL3V Series
- RL3VR Series

COMPLIANCES/WARRANTY

5-YEAR LIMITED WARRANTY

SUITABLE FOR DAMP LOCATIONS

LED

- **DOWNLIGHT/TRIM**



Catalog #:

Type:

Project:

Prepared By:

AT A GLANCE

Symmetrical output, downlight style trim series for the RL3, 3" diameter recessed downlights. The trims are available in either round or square apertures as well as an assortment of colors and finishes. Made from die-cast aluminum, the trims can be painted or anodized to meet the needs of the most difficult of applications. The trims are configured for flanged installations.

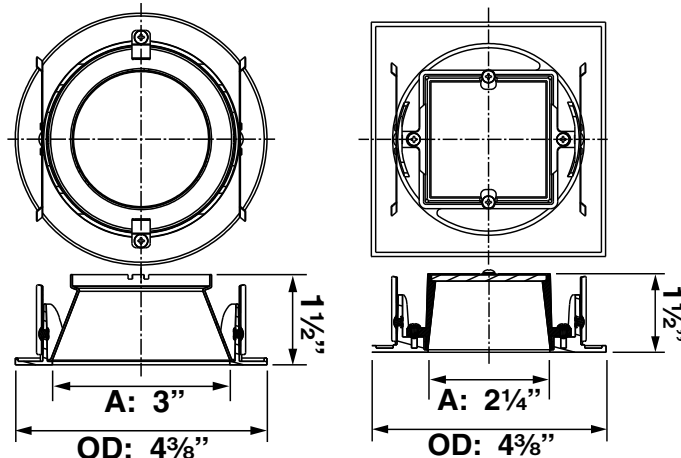
ORDER CONFIGURATOR

To order, select one option from each table column to configure the desired downlight/trim product catalog code. Then, fill in the boxes below (e.g., Downlight/Trim #: 6029-R-WH-SW). To order recessed downlights, use the corresponding specification sheet(s) for the desired compatible recessed downlight series.

DOWNLIGHT/TRIM

6029			SW
D/T MODEL	SHAPE	FINISH/COLOR	FLANGE
<input checked="" type="checkbox"/> 6029	<input type="checkbox"/> R Round <input type="checkbox"/> S Square	<input type="checkbox"/> BK Black (Painted) (<input checked="" type="checkbox"/> R Round or <input checked="" type="checkbox"/> S Square) <input type="checkbox"/> WH White (Painted) (<input checked="" type="checkbox"/> R Round or <input checked="" type="checkbox"/> S Square) <input type="checkbox"/> CL Clear (Anodized) (<input checked="" type="checkbox"/> R Round Only) <input type="checkbox"/> HZ Haze (Anodized) (<input checked="" type="checkbox"/> R Round Only)	<input checked="" type="checkbox"/> SW Self-Flanged (With Painted White Trim)

QUICK VIEW



FEATURES

SHOWER

DESIGN:

Self-Flanged, Two-Piece Construction

FINISH/COLORS/TRIM:

White Reflector covered by frosted glass;

White Flange

PRODUCTION PROCESS:

CNC Precision-Spun

MATERIAL: Specification-Grade Aluminum

Alloy, .060" Thick

LENS COVER: Sealed and Frosted Glass

COMPATIBILITY

RECESSED DOWNLIGHTS:

- RL3V Series
- RL3VR Series

COMPLIANCES/WARRANTY

 **5-YEAR LIMITED WARRANTY**

 **SUITABLE FOR WET LOCATIONS**

- **SHOWER/TRIM**



Catalog #:

Type:

Project:

Prepared By:

AT A GLANCE

Shower compliant, downlight style trim series for the RL3, 3" diameter recessed downlights. The trims are available in either round or square apertures. Made from die-cast aluminum, the trims can be painted or anodized to meet the needs of the most difficult of applications. The trims are configured for flanged installations.

ORDER CONFIGURATOR

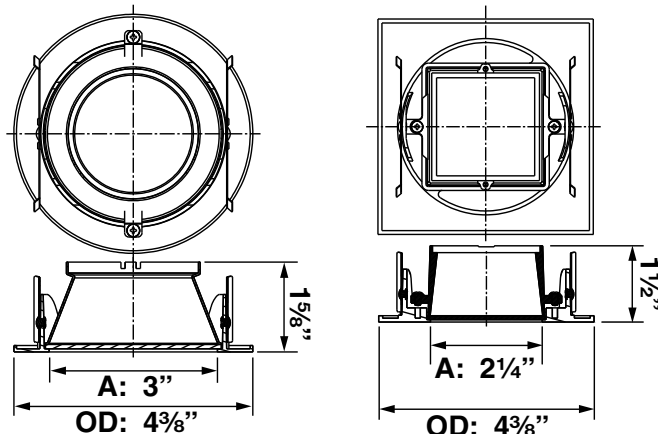
To order, select one option from each table column to configure the desired shower/trim product catalog code. Then, fill in the boxes below (e.g., Shower/Trim #: 6031-S-WH-SW). To order recessed downlights, use the corresponding specification sheet(s) for the desired compatible recessed downlight series.

SHOWER/TRIM

6031		W	SW
S/T MODEL	SHAPE	FINISH/COLOR	FLANGE
<input checked="" type="checkbox"/> 6031	<input type="checkbox"/> R Round <input type="checkbox"/> S Square	<input type="checkbox"/> WH White (Painted); <input checked="" type="checkbox"/> R Round or <input checked="" type="checkbox"/> S Square	<input checked="" type="checkbox"/> SW Self-Flanged (White)

NOTE: Behind the frosted glass, the internal reflector comes in white only. Combined with the frosted glass, a white reflector helps provide a smooth light output.

QUICK VIEW



FEATURES



BEVEL

DESIGN: Flangeless (Mud Ring Included),
Two-Piece Construction

FINISH/COLORS/TRIM:
Painted (Black or White)

PRODUCTION PROCESS:
CNC Precision-Spun

MATERIAL: Specification-Grade Aluminum
Alloy, .060" Thick

LENS COVER: Clear Glass

COMPATIBILITY

RECESSED DOWNLIGHTS:

- RL3V

COMPLIANCES/WARRANTY

- 5-YEAR LIMITED WARRANTY**
- SUITABLE FOR DAMP LOCATIONS**
- LED**
 - **BEVEL/TRIM**



Catalog #:

Type:

Project:

Prepared By:

AT A GLANCE

Shallow, splay style, downlight trim series for the RL3V, 3" diameter recessed downlights. The trims are available in round apertures in black or white. Made from die-cast aluminum, the trims can be painted to meet the needs of the most difficult of applications. The trims are configured for flangeless installations (mud ring included).

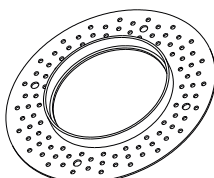
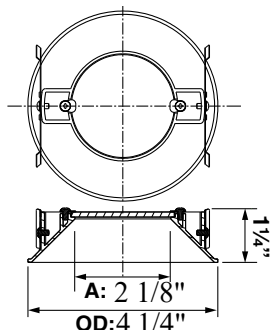
ORDER CONFIGURATOR

To order, select one option from each table column to configure the desired bevel/trim product catalog code. Then, fill in the boxes below (e.g., Bevel/Trim #: 6023-R-WH-NF). To order recessed downlights, use the corresponding specification sheet(s) for the desired compatible recessed downlight series.

BEVEL/TRIM

6033	R		NF
B/T MODEL	SHAPE	FINISH/COLOR	FLANGE
<input checked="" type="checkbox"/> 6038	<input checked="" type="checkbox"/> R Round	<input type="checkbox"/> BK Black (Painted) <input type="checkbox"/> WH White (Painted)	<input checked="" type="checkbox"/> NF No Flange (Flangeless)

QUICK VIEW



FEATURES



FLANGELESS

DESIGN:

Two-Piece Construction (reflector and a mud ring)

REFLECTOR

FINISHES:

- Painted
 - Black
 - White
 - Custom Colors (by special order)

MATERIAL:

Die-cast Aluminum

MUD RING

Cast Aluminum

FINISH: Painted White

COMPATIBILITY

RECESSED DOWNLIGHTS:

- RL3V and RL3VR Series

WARRANTY

5-YEAR LIMITED WARRANTY



Catalog #:

Type:

Project:

Prepared By:

AT A GLANCE

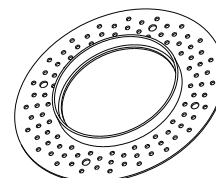
Flangeless downlight trim for the *QuantaLight* RL3V and RL3VR series. Features a 3" round aperture. White or black. Custom colors are also available. Made of die-cast aluminum. Mud ring included.

ORDER CONFIGURATOR

To order, select one option from each table column to configure the desired wall wash trim product catalog code. Then, fill in the boxes below (Example: Flangeless Trim #: 6038-R-WH-FL). To order recessed downlights, use the corresponding specification sheet for the compatible RL3V or RL3VR recessed downlight series.

WALL WASH TRIM

6038	R		NF
WALL WASH TRIM MODEL	SHAPE	REFLECTOR FINISH	FLANGE
<input checked="" type="checkbox"/> 6038	<input checked="" type="checkbox"/> R Round	<input type="checkbox"/> BK Black (Painted) <input type="checkbox"/> WH White (Painted) <input type="checkbox"/> CST Custom	<input checked="" type="checkbox"/> NF No Flange (i.e., flangeless)



Mud ring included.