

FEATURES



LED LIGHT ENGINE

WATTS/LUMENS:

30W/2100 lm, 40W/2800 lm, 50W/3500 lm, 60W/4200 lm, or 80W/5600 lm

CRI: 91 (Upgrade to 97 CRI [R9=90] available via special/custom order. See Optional section below.)

CCT: 2700K, 3000K, 3500K, or 4000K

BINNING: 3 SDCM

THERMAL MANAGEMENT: Passive

LIFE (RATED): 50,000 hours based on LED testing per LM80-08 and projected values from IESNA TM21-11.

LED DRIVER

OUTPUT POWER SUPPLY: Class II

POWER FACTOR (P_f): >.9

THD: <10%

INPUT VOLTAGE:

120V/277V at 50/60 Hz (See Voltage Below)

DIMMING:

- TRIAC/ELV, 5% (120V AC Only)
- 0-10V, 10% (120V/277V)
- See Dimming below for more options.

COMPATIBLE TRIMS

FINISH/COLORS/TRIM:

- See Compatible Trim Specification Sheets
 - 6041
 - 6042
 - 6043

OPTICS

BEAM ANGLES: 18°, 24°, 38°, or 60°

INSTALLATION

CEILING:

- Accommodates Up to 1¼" Thickness
- Non-Type IC Insulation to Be Kept 3" Away
- 6¾" Ceiling Cutout Size
- Maintenance Access from Above and Below Ceiling

MOUNTING:

- Integrated Universal Mounting Brackets
 - Advanced High-Strength Steel (AHSS)
- Hanger Bars (Sold Separately) (See Below)

J-BOX WIRING:

Integral Thru-Branch, 4 In/4 Out

EMERGENCY BACKUP BATTERY

BATTERY LED LOAD:

- Up to 7 Watts at 600 Lumens Minimum for 90 Minutes
- Up to 20 Watts at 1750 Lumens Minimum for 90 Minutes
- Remote Test Switch Included

COMPLIANCES/WARRANTY

- cETLus LISTED
- ENERGY STAR (CONSULT FACTORY)
- FCC COMPLIANT
- 5-YEAR LIMITED WARRANTY
- RoHS COMPLIANT
- SUITABLE FOR DAMP LOCATIONS
- ENERGY-EFFICIENT
- LED
- RECESSED DOWNLIGHT



Catalog #:

Type:

Project:

Prepared By:

AT A GLANCE

6" vertical, fixed-position LED recessed downlight. High-performance, specification-grade luminaire ideal for numerous applications such as retail and hospitality. Features up to 5800 delivered lumens, a variety of color temperature options (2700K, 3000K, 3500K, and 4000K), multiple beam angles (18°, 24°, 38°, or 60°), and two standard dimming options (flicker-free TRIAC/ELV, 5% and 0-10V dimming, 10%). Trims available in round or square apertures.

ORDER CONFIGURATOR

To order, select one option from each table column to configure the desired recessed downlight product catalog code. Then, fill in the boxes below (e.g., Recessed Downlight #: RL6V-35-28-60-LUTECO-NC-2). To order trims, use the corresponding specification sheet(s) for the desired compatible trim series. To order additional items (optional), up to one option from each table column can be selected from the Optional section. Then, fill in the dashed box(es).

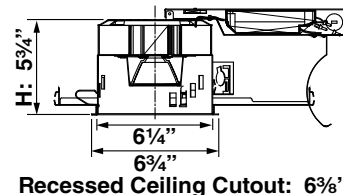
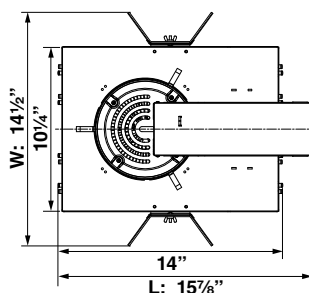
RECESSED DOWNLIGHT

RL6V					NC	
RD MODEL	CCT	LUMENS	OPTICS	DIMMING	IC TYPE	VOLTAGE

<input checked="" type="checkbox"/> RL6V	<input type="checkbox"/> 27 2700K <input type="checkbox"/> 30 3000K <input type="checkbox"/> 35 3500K <input type="checkbox"/> 40 4000K	<input type="checkbox"/> 21 2100 lm <input type="checkbox"/> 28 2800 lm <input type="checkbox"/> 35 3500 lm <input type="checkbox"/> 42 4200 lm <input type="checkbox"/> 56 5600 lm	<input type="checkbox"/> 18 18° <input type="checkbox"/> 24 24° <input type="checkbox"/> 38 38° <input type="checkbox"/> 60 60°	<input type="checkbox"/> LELV Flicker-Free TRIAC/ELV, 5% (120V Only) <input type="checkbox"/> L010 0 to 10V Dimming, 10% <input type="checkbox"/> LUTIII Lutron Hi-Lume, 1% <input type="checkbox"/> LUTECO Lutron Ecosystem, 1% <input type="checkbox"/> LDALI Dali, 1% <input type="checkbox"/> LDMX DMX512, 1%	<input checked="" type="checkbox"/> NC Non-Type IC <input type="checkbox"/> UNV 120V-277V	
--	--	---	--	--	--	--

OPTIONAL

EMERGENCY BATTERY BACKUPS	HANGER BARS (SOLD SEPARATELY)	CRI UPGRADE
<input type="checkbox"/> EMB07 7W <input type="checkbox"/> EMB25 25W	<input type="checkbox"/> HBC C Channel <input type="checkbox"/> HBF Flat Style <input type="checkbox"/> HBJ Wood Joist	<input type="checkbox"/> CRI97 CRI 97; R9=90 (2700K, 3000K and 4000K Only) <input type="checkbox"/> VIVID (See Citizen® Vivid™ Series Brilliant Type for details.)



FEATURES



DOWNLIGHT/TRIM

DESIGN:

Self-Flanged, Two-Piece Construction

FINISH/COLORS/TRIM:

Reflector is painted (Black or White) or Anodized (Clear or Haze); Flange is painted White.

PRODUCTION PROCESS:

CNC Precision-Spun

MATERIAL: Specification-Grade Aluminum Alloy, .060" Thick

LENS COVER: Clear Glass

COMPATIBILITY

RECESSED DOWNLIGHTS:

- RL6A Series (round only)
- RL6V Series
- RL6VR Series

COMPLIANCES/WARRANTY

5-YEAR LIMITED WARRANTY

SUITABLE FOR DAMP LOCATIONS

FOR LED DOWNLIGHTS

- **DOWNLIGHT TRIM**



Catalog #:

Type:

Project:

Prepared By:

AT A GLANCE

Symmetrical output, downlight style trim series for the RL6, 6" diameter recessed downlights. The trims are available in either round or square apertures as well as an assortment of colors and finishes. Made from die-cast aluminum, the trims can be painted or anodized to meet the needs of the most difficult of applications. The trims are configured for flanged installations.

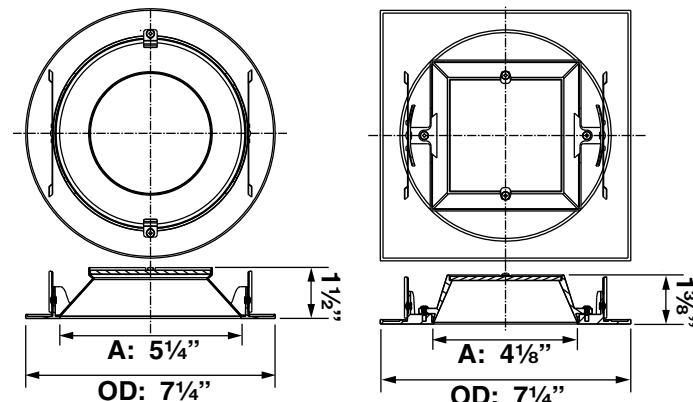
ORDER CONFIGURATOR

To order, select one option from each table column to configure the desired downlight/trim product catalog code. Then, fill in the boxes below (e.g., Downlight/Trim #: 6041-R-WH-SW). To order recessed downlights, use the corresponding specification sheet(s) for the desired compatible recessed downlight series.

DOWNLIGHT/TRIM

6041			SW
D/T MODEL	SHAPE	FINISH/COLOR	FLANGE
<input checked="" type="checkbox"/> 6041	<input type="checkbox"/> R Round <input type="checkbox"/> S Square	<input type="checkbox"/> BK Black (Painted) (<input checked="" type="checkbox"/> R Round or <input checked="" type="checkbox"/> S Square) <input type="checkbox"/> WH White (Painted) (<input checked="" type="checkbox"/> R Round or <input checked="" type="checkbox"/> S Square) <input type="checkbox"/> CL Clear (Anodized) (<input checked="" type="checkbox"/> R Round Only) <input type="checkbox"/> HZ Haze (Anodized) (<input checked="" type="checkbox"/> R Round Only)	<input checked="" type="checkbox"/> SW Self-Flanged (With Painted White Trim)

QUICK VIEW



FEATURES



SHOWER

DESIGN:

Self-Flanged, Two-Piece Construction

FINISH/COLORS/TRIM:

Painted (White); Painted White Flange Trim

PRODUCTION PROCESS:

CNC Precision-Spun

MATERIAL: Specification-Grade Aluminum

Alloy, .060" Thick

LENS COVER: Sealed and Frosted Glass

COMPATIBILITY

RECESSED DOWNLIGHTS:

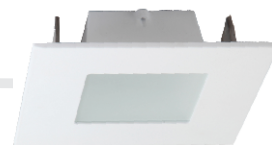
- RL6V Series
- RL6VR Series

COMPLIANCES/WARRANTY

5-YEAR LIMITED WARRANTY

SUITABLE FOR WET LOCATIONS

SHOWER TRIM



Catalog #:

Type:

Project:

Prepared By:

AT A GLANCE

Shower compliant, downlight style trim series for the RL6, 6" diameter recessed downlights. The trims are available in either round or square apertures in a White finish. Made from die-cast aluminum, the trims can be painted or anodized to meet the needs of the most difficult of applications. The trims are configured for flanged installations.

ORDER CONFIGURATOR

To order, select one option from each table column to configure the desired shower/trim product catalog code. Then, fill in the boxes below (e.g., Shower/Trim #: 6043-S-WH-SW).

To order recessed downlights, use the corresponding specification sheet(s) for the desired compatible recessed downlight series.

SHOWER/TRIM

6043			SW
S/T MODEL	SHAPE	FINISH/COLOR	FLANGE
<input checked="" type="checkbox"/> 6043	<input type="checkbox"/> R Round <input type="checkbox"/> S Square	<input type="checkbox"/> WH White (Painted)	<input checked="" type="checkbox"/> SW Self-Flanged (With Painted White Trim)

QUICK VIEW

