



FEATURES

LED LIGHT ENGINE

WATTS/LUMENS:

- Type IC: 20W/1400 lm or 30W/2100 lm
- Type IC and Non-Type IC: 40W/2800 lm
- Non-Type IC: 50W/3500 lm, 60W/4200 lm, 80W/5600 lm, or 100W/7000 lm

CRI: 91 (Upgrade to 97 CRI [R9=90] available via special/custom order. See Optional section below.)

CCT: 2700K, 3000K, 3500K, or 4000K

BINNING: 3 SDCM

THERMAL MANAGEMENT: Passive

LIFE (RATED): 50,000 hours based on LED testing per LM80-08 and projected values from IESNA TM21-11.

LED DRIVER

OUTPUT POWER SUPPLY: Class II

POWER FACTOR (P_f): >.9

THD: <10%

INPUT VOLTAGE:

120V/277V at 50/60 Hz (See Voltage Below)

DIMMING:

- TRIAC/ELV, 5% (120V AC Only)
- 0-10V, 10% (120V/277V)
- See Dimming below for more options.

COMPATIBLE TRIMS

FINISH/COLORS/TRIM:

- See Compatible Trim Specification Sheets
- 6055
 - 6056
 - 6058
 - 6057

OPTICS

BEAM ANGLES: 18°, 24°, 38°, or 60°

ADJUSTABLE/LOCKABLE AIMING:

Up to 40° tilt (0° to 40° degrees from vertical axis). Up to 359° rotation around vertical axis.

INSTALLATION

CEILING:

- Accommodates Up to 1 1/4" Thickness
- Type IC or Non-Type IC: Type IC Suitable for Direct Contact with Insulation. Non-Type IC Insulation to Be Kept 3" Away.

8 3/8" Ceiling Cutout Size

- Maintenance Access from Above and Below Ceiling

MOUNTING:

- Integrated Universal Mounting Brackets
- Hanger Bars (Sold Separately - See Below)

J-BOX WIRING:

Integral Thru-Branch, 4 In/4 Out

OPTIONAL BACKUP BATTERY

BATTERY LED LOAD:

- Up to 7 Watts at 600 Lumens Minimum for 90 Minutes
- Up to 20 Watts at 1750 Lumens Minimum for 90 Minutes

COMPLIANCES/WARRANTY

cETLus LISTED

FCC COMPLIANT

5-YEAR LIMITED WARRANTY*

RoHS COMPLIANT

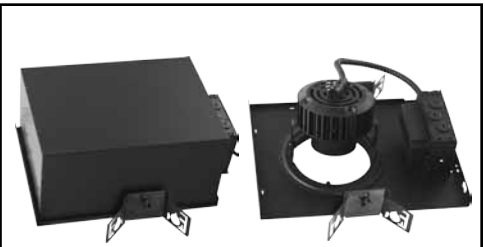
SUITABLE FOR DAMP LOCATIONS**

LED

RECESSED DOWNLIGHT

* Excessive heat due to hot installation location will lead to early failures an such damage is not warranted.

** Suitable for showers and exterior use only when using a properly installed wet location trim. Bug and/or dust intrusion can lead to early LED failures. Damp and wet location ratings do not mean water proof. Only mount downlight fixtures in cavity protected from water intrusion. If used outdoors, seal the trim piece with latex sealant to block insect intrusion. If insects can get into ceiling cavity, consider using a Type IC downlight fixture.



Catalog #:

Type:

Project:

Prepared By:

AT A GLANCE

8" internally adjustable LED recessed downlight. High-performance, specification-grade luminaire ideal for numerous applications such as retail and hospitality. Features up to 7000 delivered lumens, a variety of color temperature options (2700K, 3000K, 3500K, and 4000K), multiple beam angles (18°, 24°, 38°, or 60°), and two standard dimming options (flicker-free TRIAC/ELV, 5% and 0-10V dimming, 10%). Trims available in round or square apertures.

ORDER CONFIGURATOR

To order, select one option from each table column to configure the desired recessed downlight product catalog code. Then, fill in the boxes below (e.g., Recessed Downlight #: RL8A-35-42-60-LUTECO-IC-U). To order trims, use the corresponding specification sheet(s) for the desired compatible trim series. To order additional items (optional), up to one option from each table column can be selected from the Optional section. Then, fill in the dashed box(es).

RECESSED DOWNLIGHT #

RL8A						
------	--	--	--	--	--	--

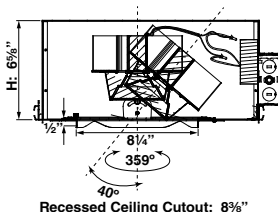
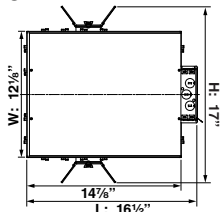
RD MODEL	CCT	LUMENS	OPTICS	DIMMING	IC TYPE	VOLTAGE
<input checked="" type="checkbox"/> RL8A	<input type="checkbox"/> 27 2700K <input type="checkbox"/> 30 3000K <input type="checkbox"/> 35 3500K <input type="checkbox"/> 40 4000K	<input type="checkbox"/> 14 1400 lm <input type="checkbox"/> 21 2100 lm <input type="checkbox"/> 28 2800 lm Non-Type IC ONLY: <input type="checkbox"/> 35 3500 lm (Non-Type IC) <input type="checkbox"/> 42 4200 lm (Non-Type IC) <input type="checkbox"/> 56 5600 lm (Non-Type IC) <input type="checkbox"/> 70 7000 lm (Non-Type IC)	<input type="checkbox"/> 18 18° <input type="checkbox"/> 24 24° <input type="checkbox"/> 38 38° <input type="checkbox"/> 60 60°	<input type="checkbox"/> LELV Flicker-Free TRIAC/ELV, 5% (120V Only) <input type="checkbox"/> L010 0 to 10V Dimming, 10% <input type="checkbox"/> LUTIII Lutron Hi-Lume, 1% <input type="checkbox"/> LUTECO Lutron Ecosystem, 1% <input type="checkbox"/> LDALI Dali, 1%	<input type="checkbox"/> IC Type IC <input type="checkbox"/> ICCP Type IC, Chicago Plenum <input type="checkbox"/> INC Non-Type IC	<input type="checkbox"/> U 120V-277V

OPTIONAL (SOLD SEPARATELY)

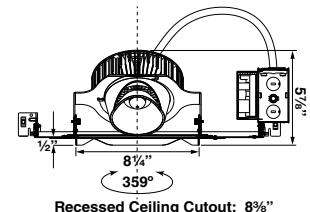
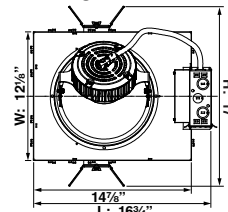
--	--	--

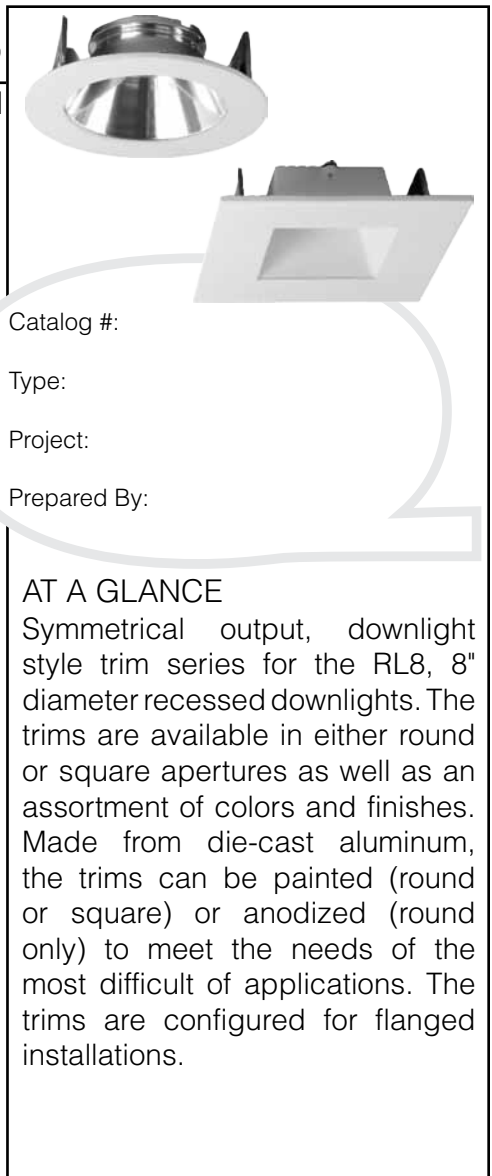
EMERGENCY BATTERY BACKUPS	HANGER BARS (SOLD SEPARATELY)	CRI UPGRADE
<input type="checkbox"/> EMB07 7W <input type="checkbox"/> EMB25 25W	<input type="checkbox"/> HBC C Channel <input type="checkbox"/> HBF Flat Style <input type="checkbox"/> HBJ Wood Joist	<input type="checkbox"/> CRI97 CRI 97 (R9=90 Upgrade) <input type="checkbox"/> VIVID Vivid™ Series Brilliant Type for details.)

TYPE IC



NON-TYPE IC





FEATURES

DOWNLIGHT/TRIM

DESIGN: Self-Flanged, Two-Piece Construction
FINISH/COLORS/TRIM: Painted (Black or White) or Anodized (Clear, Haze, or Wheat) (Round Only); Painted White Flange Trim
PRODUCTION PROCESS: CNC Precision-Spun
MATERIAL: Specification-Grade Aluminum Alloy, .060" Thick
LENS COVER: Clear Glass

COMPATIBILITY

- RECESSED DOWNLIGHTS:**
- RL8A Series
 - RL8V Series
 - RL8VR Series

COMPLIANCES/WARRANTY

- 5-YEAR LIMITED WARRANTY**
- SUITABLE FOR DAMP LOCATIONS**
- LED**
 - **DOWNLIGHT/TRIM**

Catalog #:

Type:

Project:

Prepared By:

AT A GLANCE

Symmetrical output, downlight style trim series for the RL8, 8" diameter recessed downlights. The trims are available in either round or square apertures as well as an assortment of colors and finishes. Made from die-cast aluminum, the trims can be painted (round or square) or anodized (round only) to meet the needs of the most difficult of applications. The trims are configured for flanged installations.

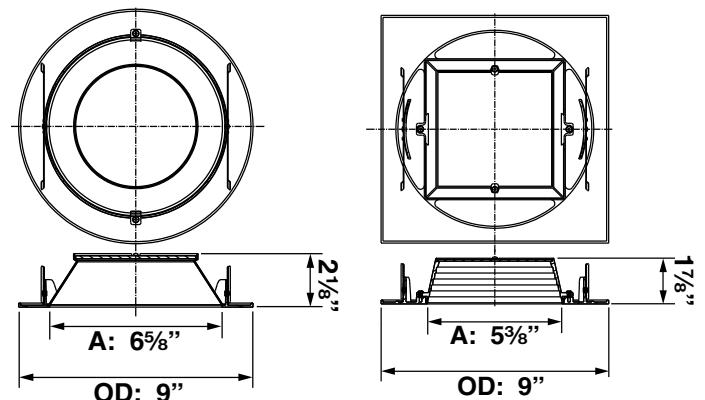
ORDER CONFIGURATOR

To order, select one option from each table column to configure the desired downlight/trim product catalog code. Then, fill in the boxes below (e.g., Downlight/Trim #: 6055-R-WH-SW). To order recessed downlights, use the corresponding specification sheet(s) for the desired compatible recessed downlight series.

DOWNLIGHT/TRIM #

6055			SW
D/T MODEL	SHAPE	FINISH/COLOR	FLANGE
<input checked="" type="checkbox"/> 6055	<input type="checkbox"/> R Round <input type="checkbox"/> S Square	<input type="checkbox"/> BK Black (Painted) (<input checked="" type="checkbox"/> R Round or <input checked="" type="checkbox"/> S Square) <input type="checkbox"/> WH White (Painted) (<input checked="" type="checkbox"/> R Round or <input checked="" type="checkbox"/> S Square) <input type="checkbox"/> CL Clear (Anodized) (<input checked="" type="checkbox"/> R Round Only) <input type="checkbox"/> HZ Haze (Anodized) (<input checked="" type="checkbox"/> R Round Only) <input type="checkbox"/> WT Wheat (Anodized) (<input checked="" type="checkbox"/> R Round Only)	<input checked="" type="checkbox"/> SW Self-Flanged (With Painted White Trim)

QUICK VIEW



FEATURES   

SHOWER LED

DESIGN:
Self-Flanged, Two-Piece Construction

FINISH/COLORS/TRIM:
Painted (Black or White) or Anodized (Clear, Haze, or Wheat); Painted White Flange Trim

PRODUCTION PROCESS:
CNC Precision-Spun

MATERIAL: Specification-Grade Aluminum Alloy, .060" Thick


LENS COVER: Sealed and Frosted Glass


COMPATIBILITY


RECESSED DOWNLIGHTS:

- RL8A Series
- RL8V Series
- RL8VR Series

COMPLIANCES/WARRANTY

 **5-YEAR LIMITED WARRANTY**

 **SUITABLE FOR WET LOCATIONS**

 **LED**

- **SHOWER/TRIM**



ORDER CONFIGURATOR

To order, select one option from each table column to configure the desired shower/trim product catalog code. Then, fill in the boxes below (e.g., Shower/Trim #: 6057-S-WH-SW). To order recessed downlights, use the corresponding specification sheet(s) for the desired compatible recessed downlight series.

SHOWER/TRIM #

6057			SW
S/T MODEL	SHAPE	FINISH/COLOR	FLANGE
<input checked="" type="checkbox"/> 6057	<input type="checkbox"/> R Round <input type="checkbox"/> S Square	<input type="checkbox"/> BK Black (Painted) (<input checked="" type="checkbox"/> R Round or <input checked="" type="checkbox"/> S Square) <input type="checkbox"/> WH White (Painted) (<input checked="" type="checkbox"/> R Round or <input checked="" type="checkbox"/> S Square) <input type="checkbox"/> CL Clear (Anodized) (<input checked="" type="checkbox"/> R Round Only) <input type="checkbox"/> HZ Haze (Anodized) (<input checked="" type="checkbox"/> R Round Only) <input type="checkbox"/> WT Wheat (Anodized) (<input checked="" type="checkbox"/> R Round Only)	<input checked="" type="checkbox"/> SW Self-Flanged (With Painted White Trim)

QUICK VIEW

